

PART OF THE E.1/2, OF SEC. 2, T.7N., R.2E.;  
AND PART OF THE S.1/2, OF SEC. 26, & PART OF SEC. 35, T.8N., R.2E., S.L.B. & M.

# SUNRIDGE HIGHLANDS NO. 11

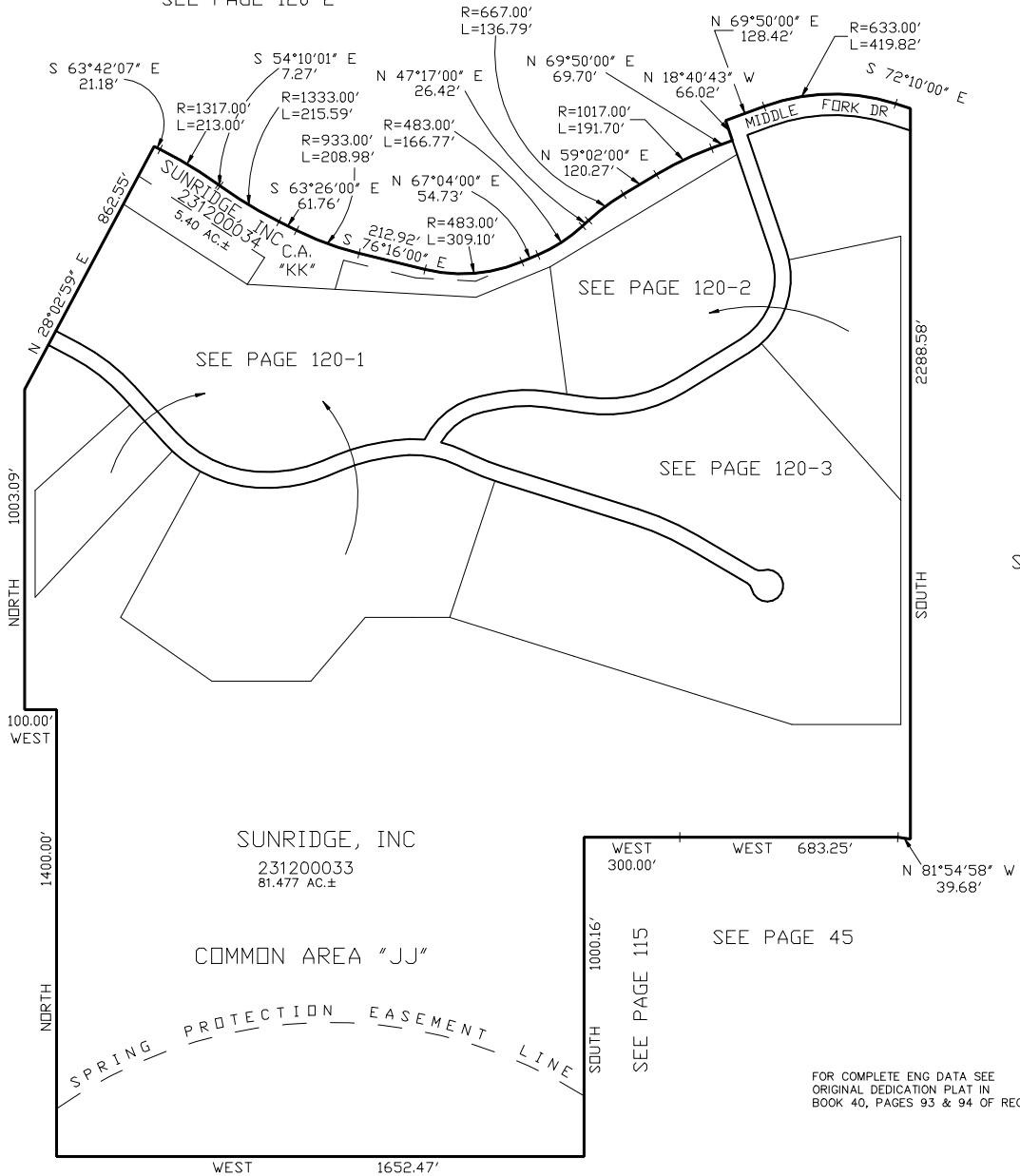
TAXING UNIT: 58

A CLUSTER SUMMER HOME SUBDIVISION  
COMMON AREAS "JJ" & "KK"

IN WEBER COUNTY

SCALE 1" = 300'

SEE PAGE 120-2



SEE PAGE 120-2

SEE PAGE 120-1

SEE PAGE 120-3

SEE PAGE 45

SEE PAGE 97

SEE PAGE 45

SEE PAGE 115

SEE PAGE 45

FOR COMPLETE ENG DATA SEE  
ORIGINAL DEDICATION PLAT IN  
BOOK 40, PAGES 93 & 94 OF RECORDS.